

Homeless Project



Gilly Barringer, CNS
Palliative Care
Community Team

The figures

Between Jan-Oct 2016 43 sudden and avoidable deaths within the field of substance misuse in the city of Plymouth. In 2013 this figure was 27.

25 males and 18 females of which 22 were open to services at time of death, 14 had been open but closed within 6 month's of death and 7 closed to services within 12 months

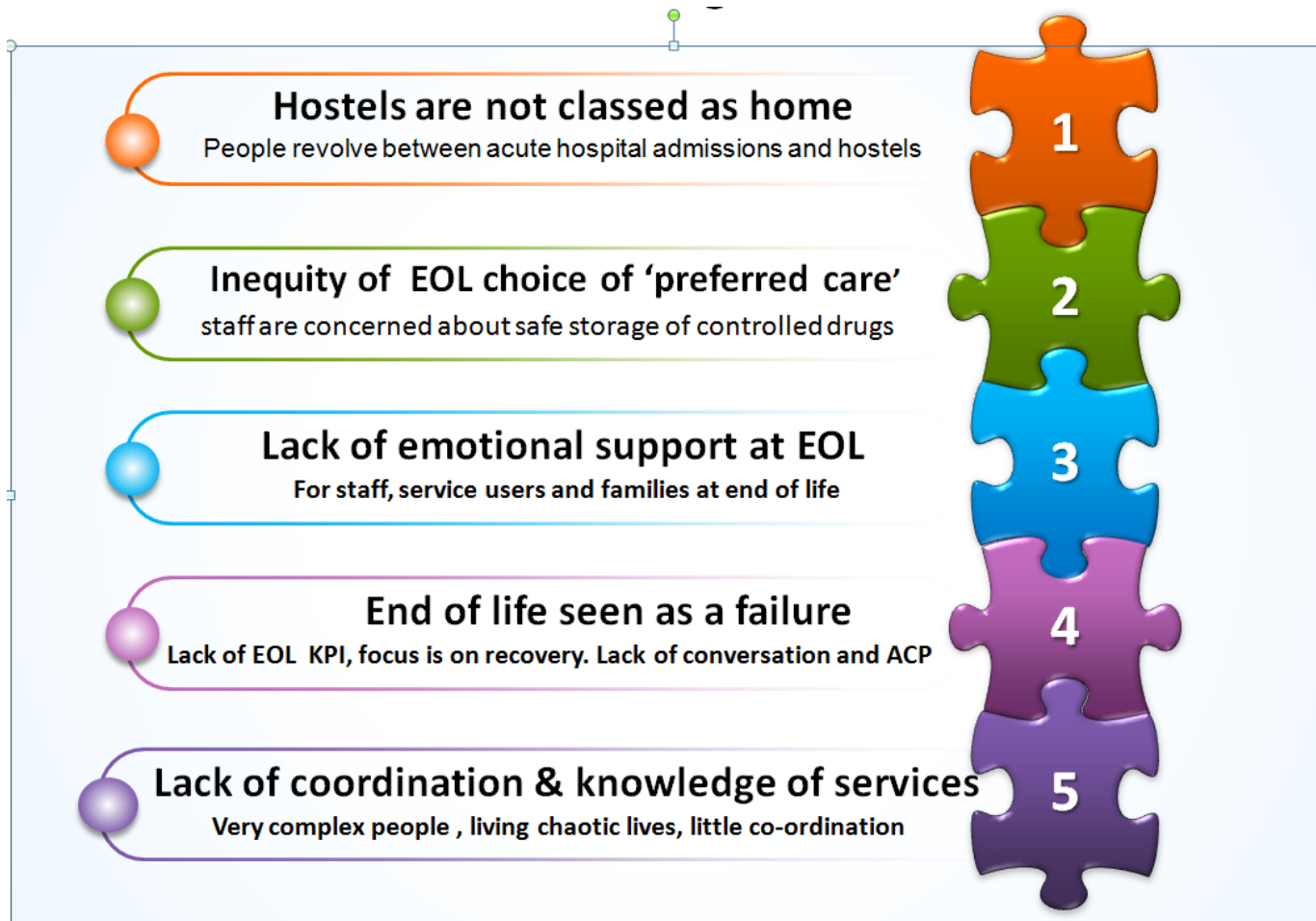
13 of these people had been known to services over 10 years 12 between 1-5 years in treatment and 9 between 6-9 years

11 people were in services less than a year

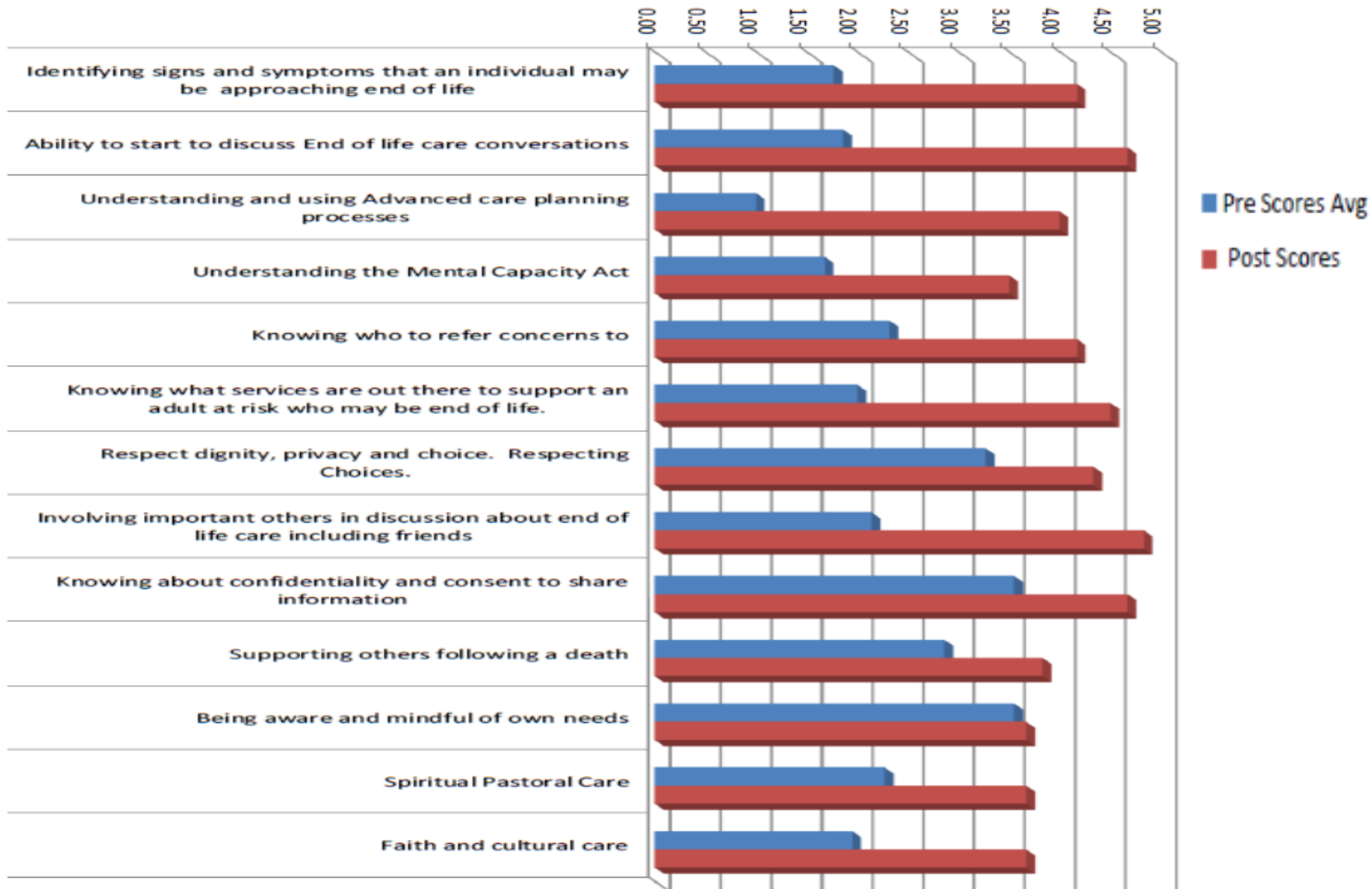
National EoL Care Programme

- “According to the 2008 EoL care strategy, high quality EoL care should be available where ever the person may be; at home, in a care home, in a hospital, in a hospice or elsewhere. Implementation of this strategy should enhance choice, equality and value for money.” (EoL Care Strategy, DoH, 2008)

Main Issues



Outcomes



Planned Service and Quality Improvements



Thank you for Listening



At the heart of everything we do